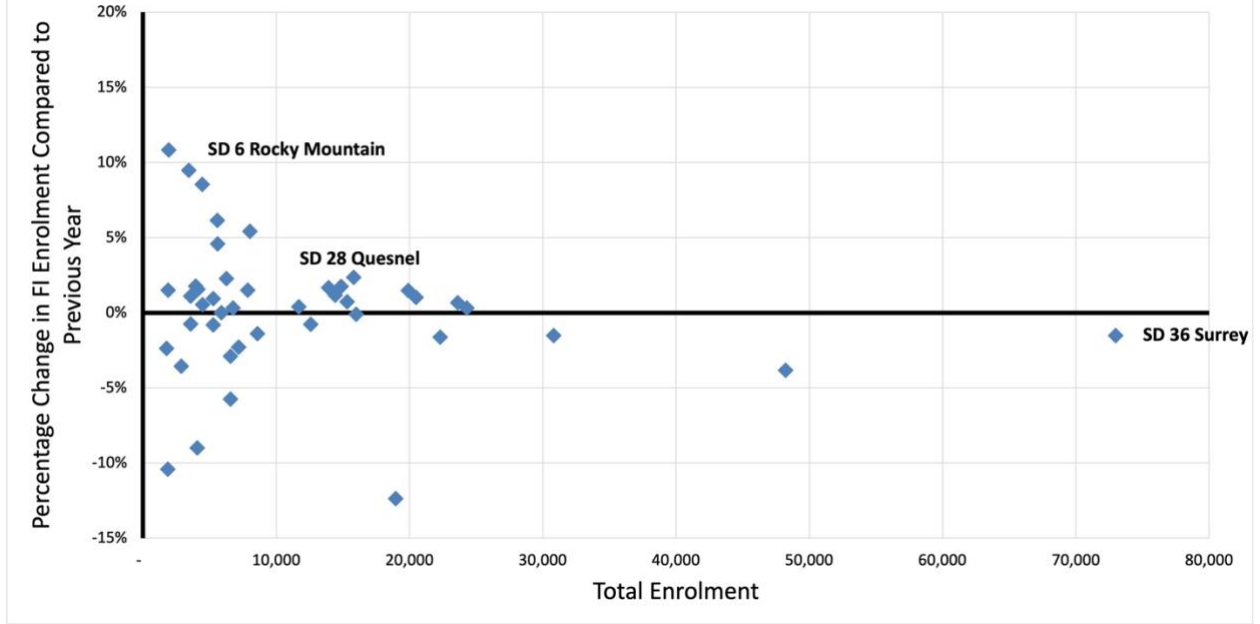
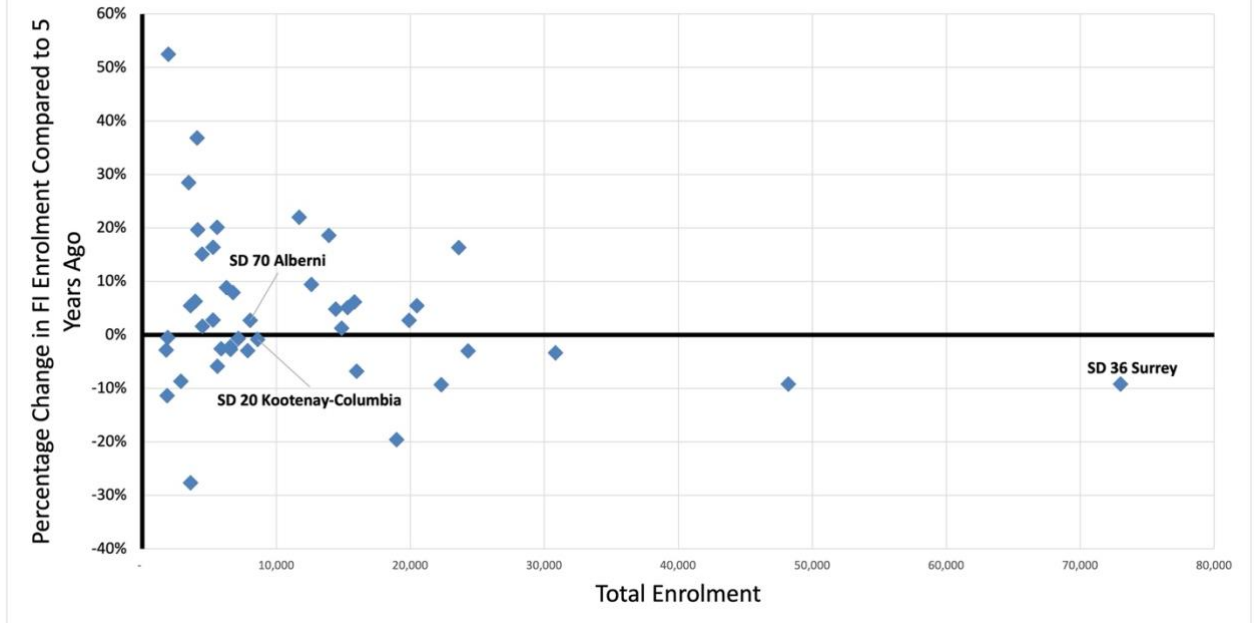


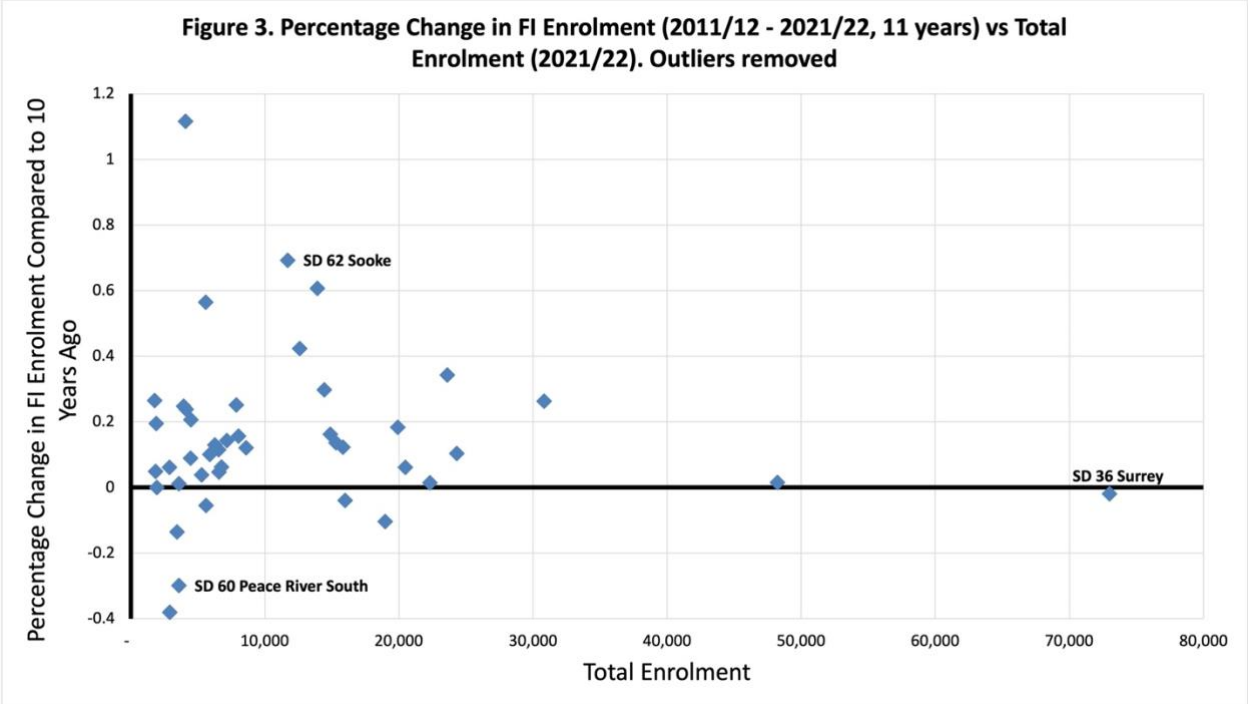
Figure 1. Percentage Change in FI Enrolment (2020/21 - 2021/22, 2 years) vs Total Enrolment (2021/22). Outliers removed



Note: Actual FI enrolment numbers may be higher than reported due to possible missing data

Figure 2. Percentage Change in FI Enrolment (2016/17 - 2021/22, 6 years) vs Total Enrolment (2021/22). Outliers removed.





Note: Actual FI enrolment numbers may be higher than reported due to possible missing data