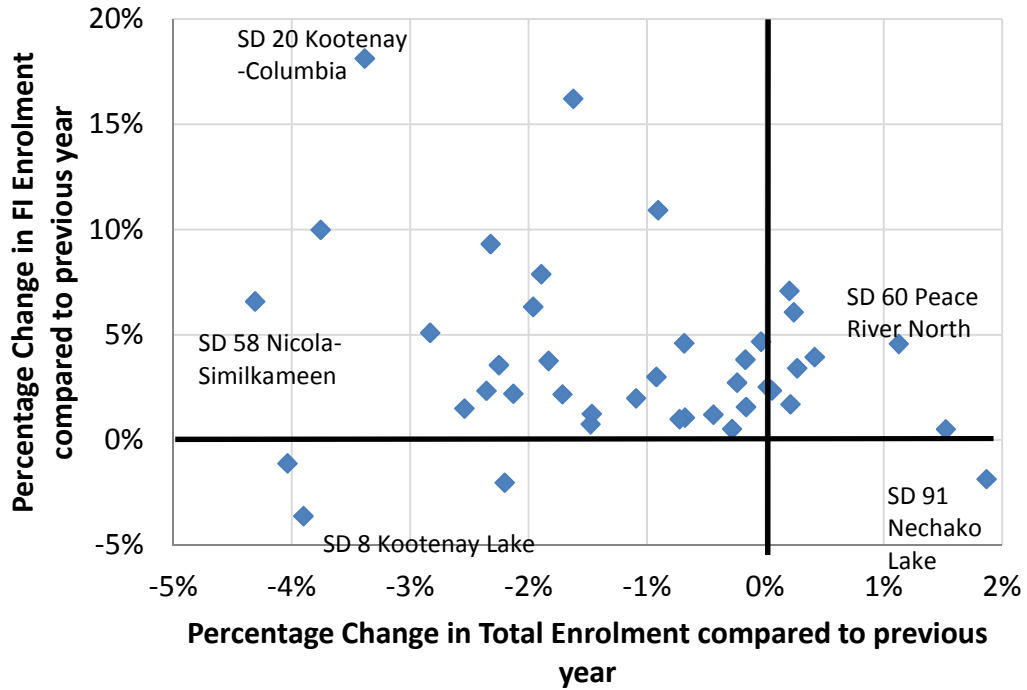
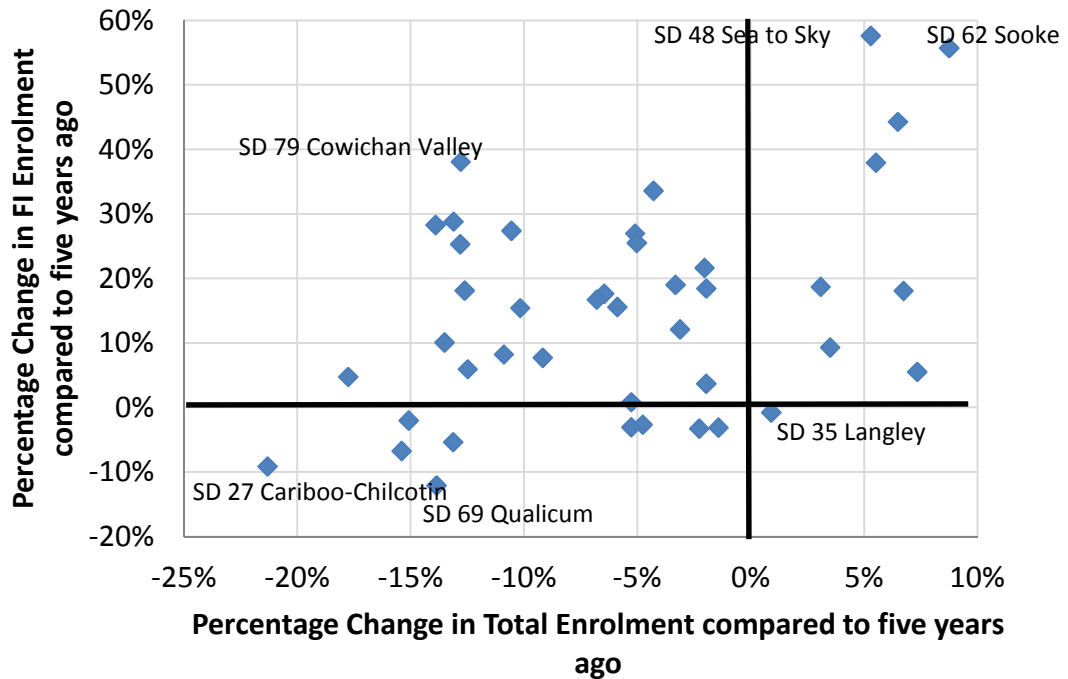


Figure 1. Percentage Change in FI enrolment vs. Percentage Change in Total Enrolment (2012/13-2013/14, 2 years). Outliers removed



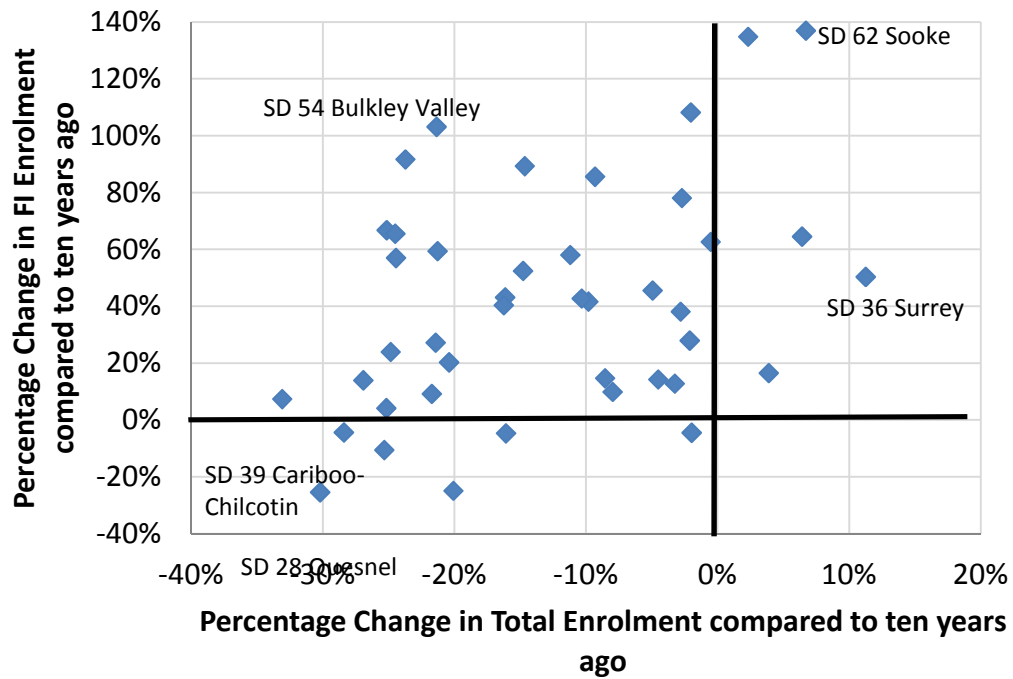
Note: Actual FI enrolment numbers may be higher than reported due to possible missing data.

Figure 2. Percentage Change in FI Enrolment vs. Percentage Change in Total Enrolment (2008/09-2013/14, 6 years). Outliers removed



Note: Actual FI enrolment numbers may be higher than reported due to possible missing data.

Figure 3. Percentage Change in FI Enrolment vs. Percentage Change in Total Enrolment (2003/04-2013/14, 11 years). Outliers removed.



Note: Actual FI enrolment numbers may be higher than reported due to possible missing data.