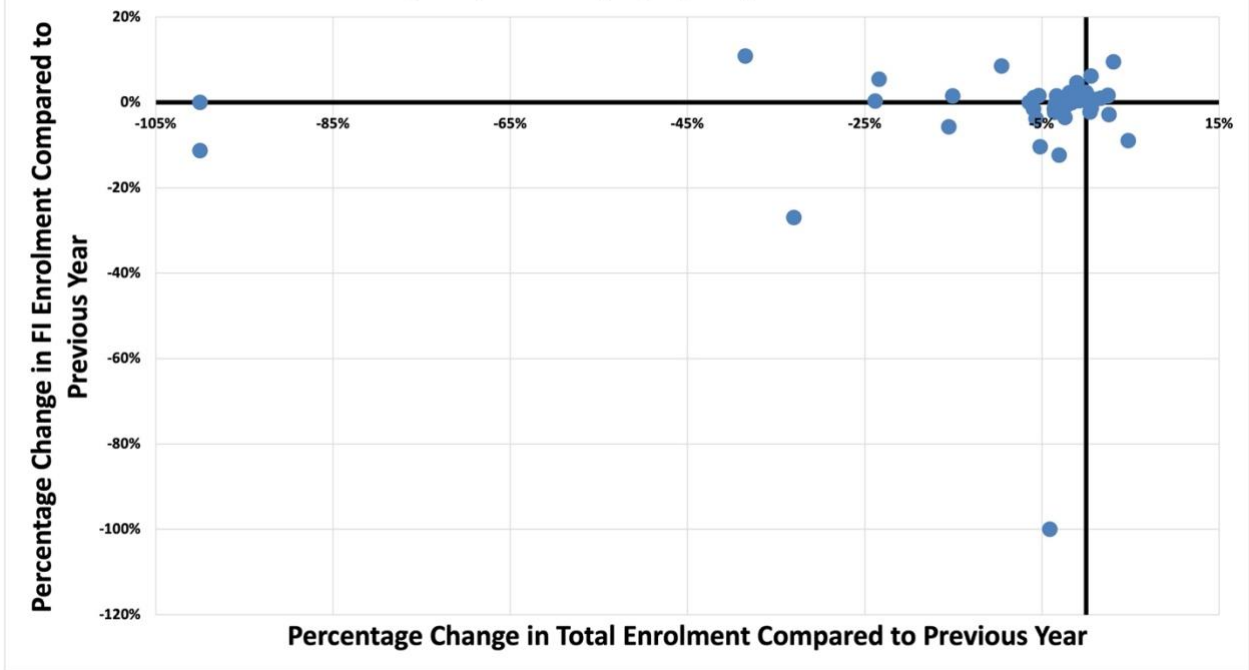


Figure 1. Percentage Change in FI Enrolment vs Percentage Change in Total Enrolment (2020/21 - 2021/22, 2 years). Outliers removed



Note: Actual FI enrolment numbers may be higher than reported due to possible missing data

Figure 2. Percentage Change in FI Enrolment vs Percentage Change in Total Enrolment (2016/17 - 2021/22, 6 years). Outliers removed

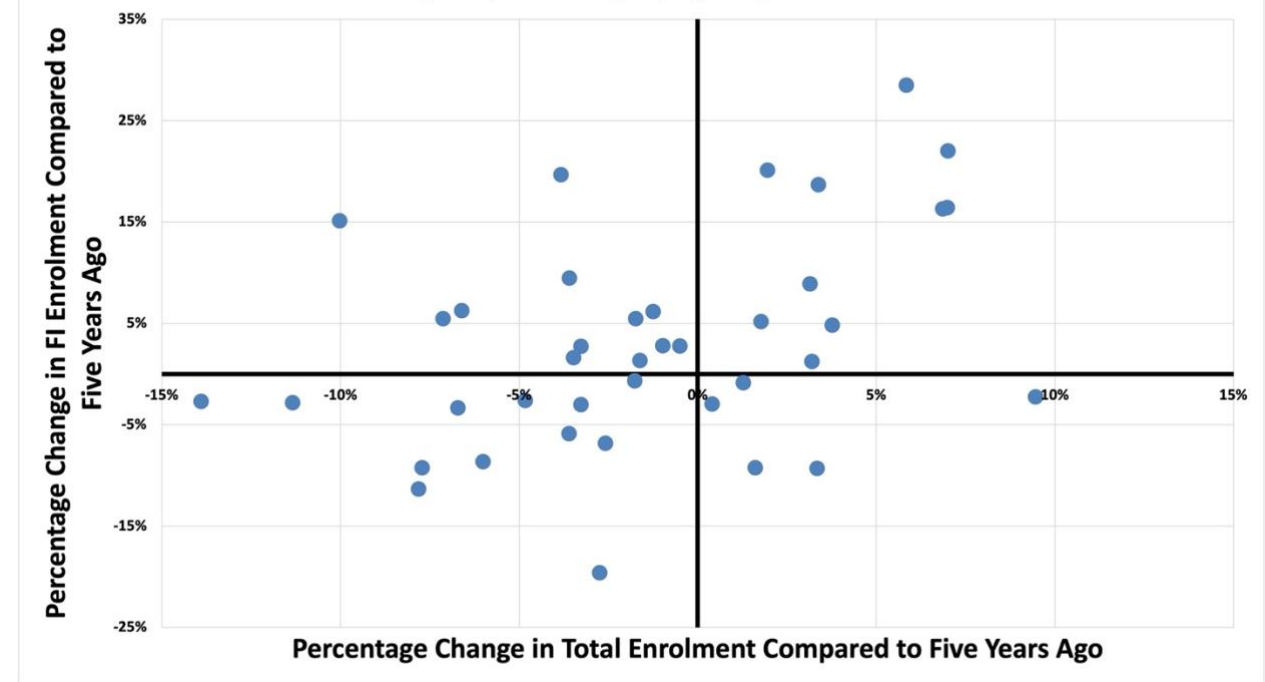
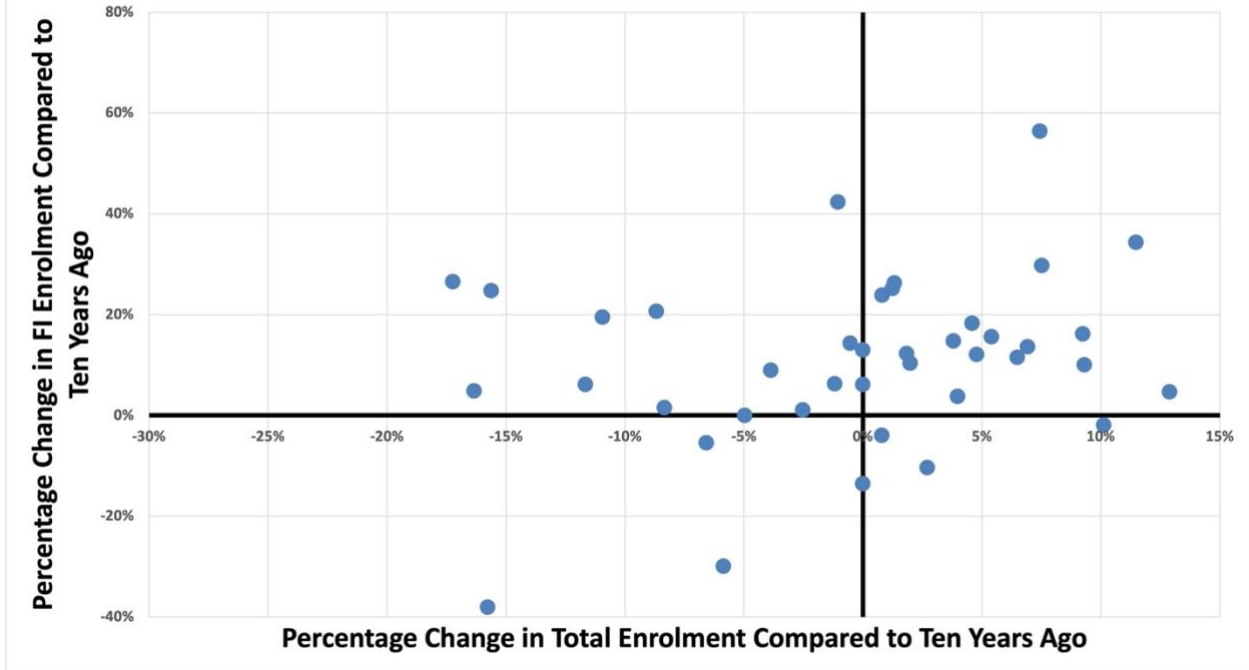


Figure 3. Percentage Change in FI Enrolment vs Percentage Change in Total Enrolment (2011/12 - 2021/22, 11 years). Outliers Removed



Note: Actual FI enrolment numbers may be higher than reported due to possible missing data