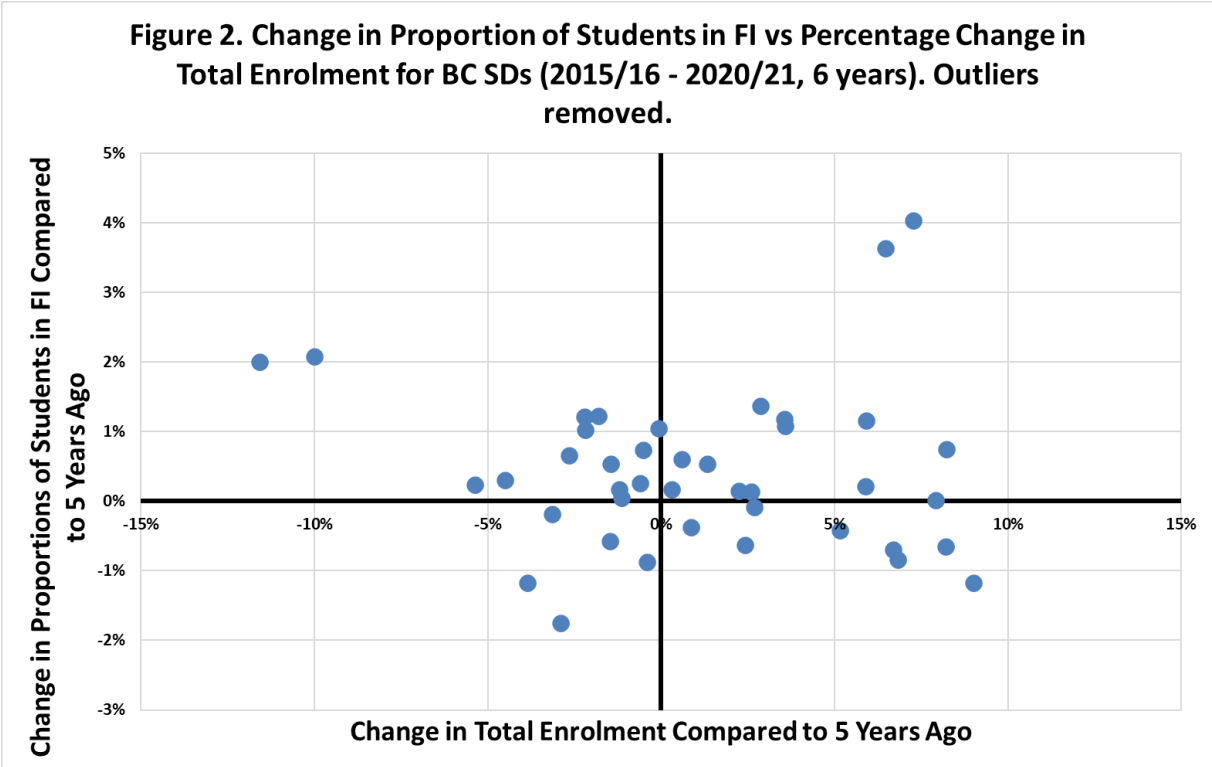
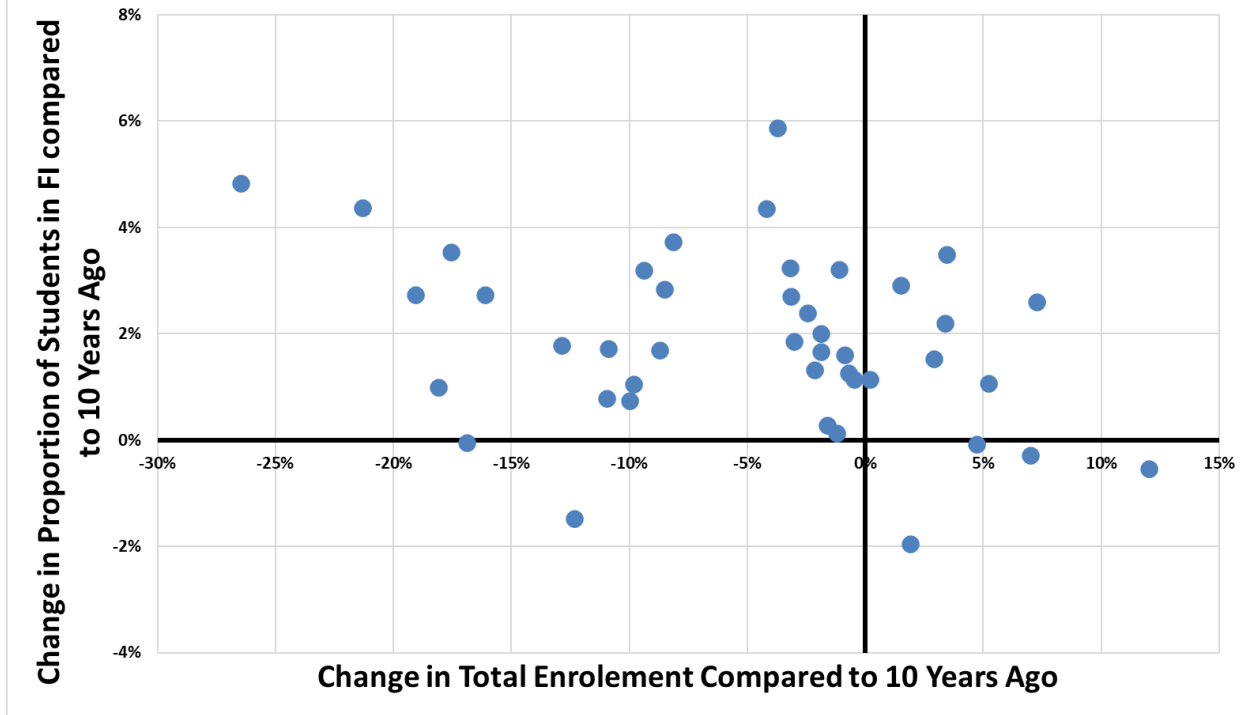


Note: Actual FI enrolment numbers may be higher than reported due to possible missing data



Note: Actual FI enrolment numbers may be higher than reported due to possible missing data

**Figure 3. Change in Proportion of Students in FI vs Percentage change in Total Enrolment fo BC SDs (2010/11 - 2020/21, 11 years). Outliers removed**



Note: Actual FI enrolment numbers may be higher than reported due to possible missing data